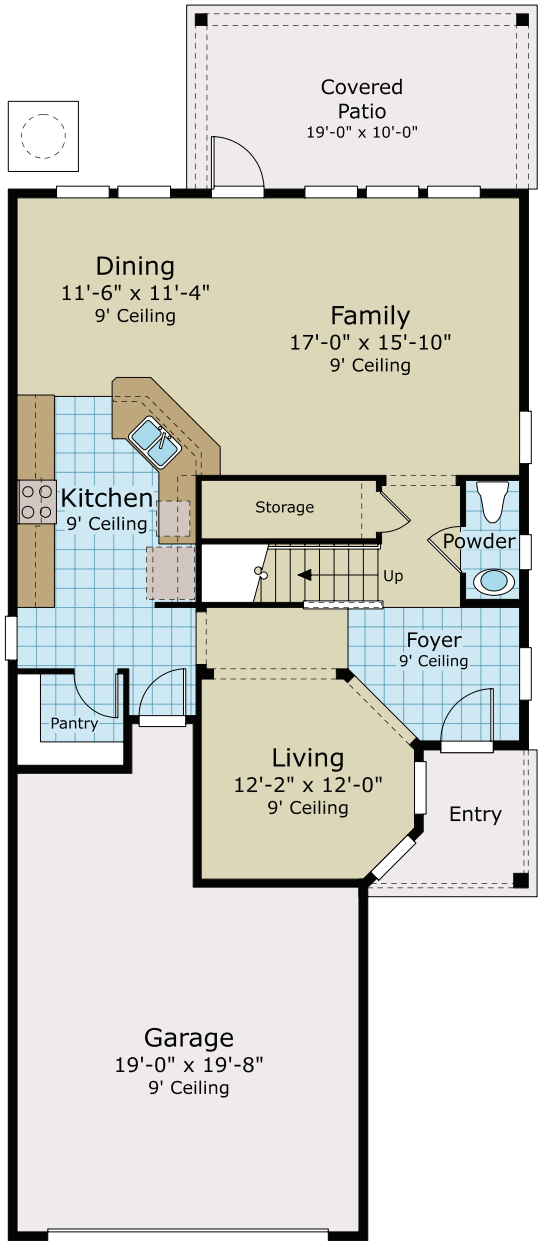




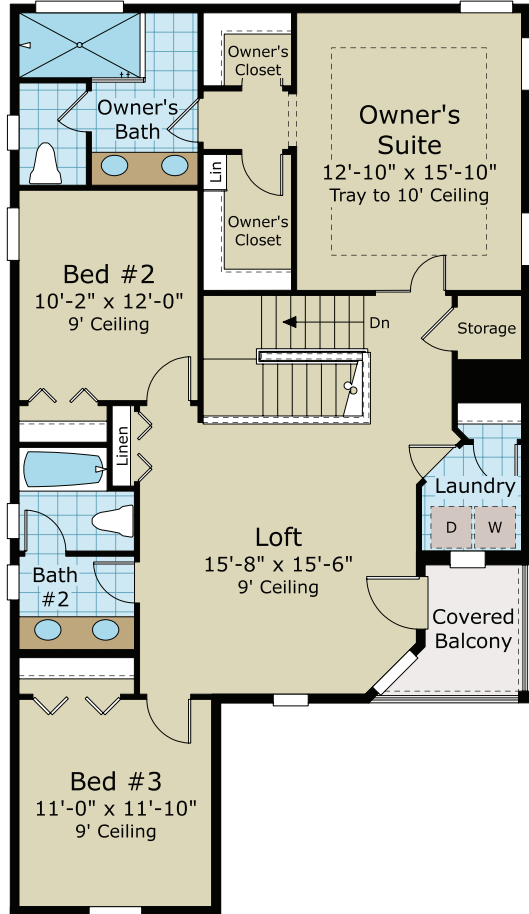
MODERN COASTAL ELEVATION #3

# THE JUNIPER

FROM THE ASPIRATION COLLECTION  
AT CROSSWINDS



FIRST FLOOR



SECOND FLOOR



MODERN FARMHOUSE ELEVATION #6



MODERN PRAIRIE ELEVATION #1

3 BEDROOMS, 2 1/2 BATHS, LOFT AND 2-CAR GARAGE  
LIVING AREA: 2,263 SQ. FT.



Illustrations are artists concepts. Actual colors may vary from what is seen on brochure. Dimensions and square footage are approximate. Builder reserves the right to modify floor plans, elevations, colors and materials without notice. Actual areas may vary with construction. Certain items shown are for conception only and may not be included as standard. See standard features for more information. Floor plan shown is for the Modern Farmhouse Elevation; other elevations may vary floor plan slightly. Marketed Exclusively by Providence Realty LLC. NOT TO SCALE. © Copyright 2023 Providence Homes, Inc. - ALL RIGHTS RESERVED. CGC053640. 08/01/23