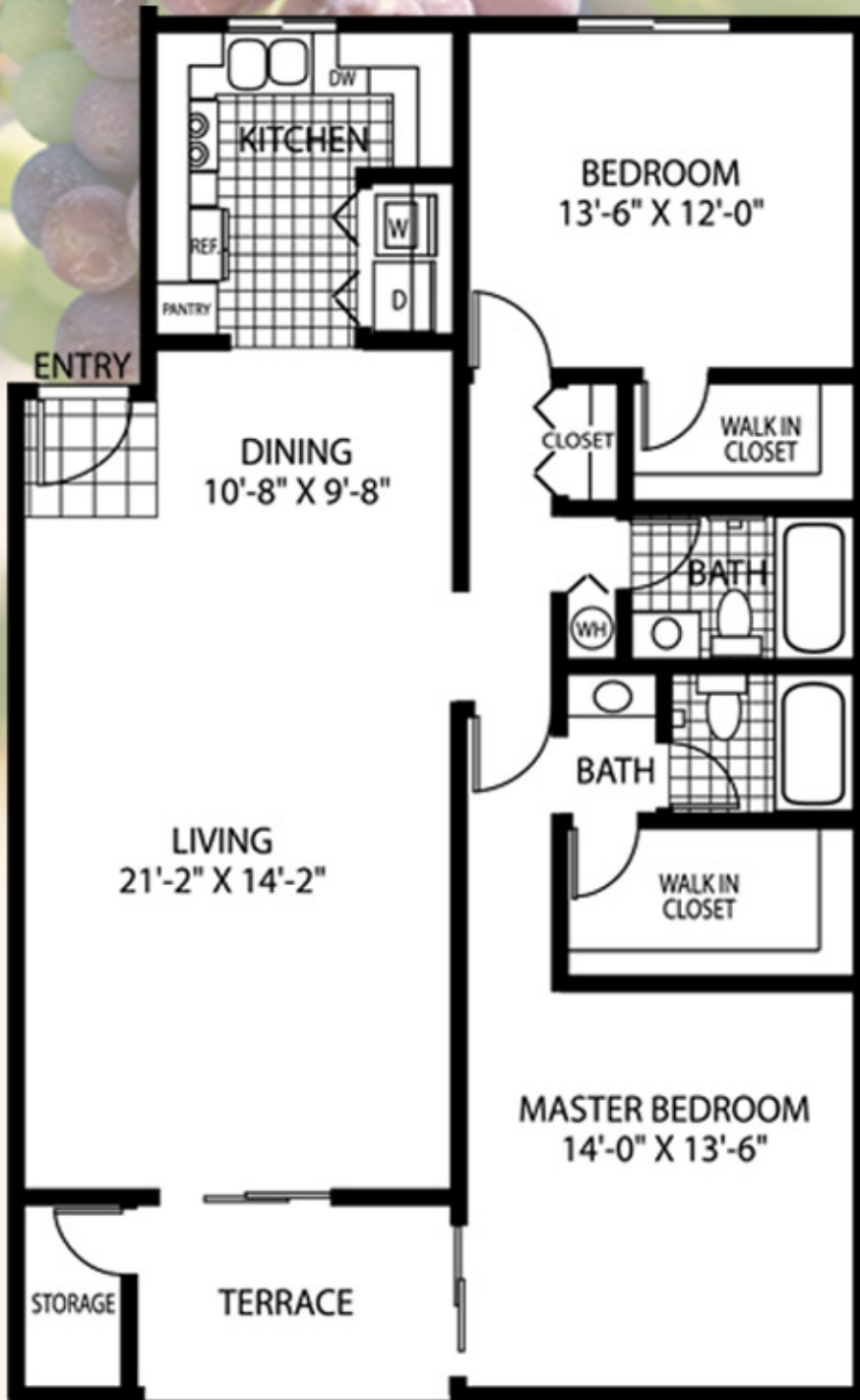


*Savor the Lifestyle...  
Sonoma Southside*

# *Zinfandel*

TWO BEDROOM  
TWO BATH  
1,310 SQUARE FEET



SPACIOUS FLOORPLANS • WASHER/DRYER CONNECTION • MICROWAVES • ENERGY EFFICIENT GE APPLIANCES  
DESIGNER GRANITE KITCHEN COUNTERS/BACKSPASHES • CULTURED MARBLE BATHROOM VANITY TOPS  
STAINED WOOD EUROPEAN STYLED KITCHEN & BATH CABINETRY • UPGRADED KITCHEN & BATHROOM SINKS & FAUCETS  
UPGRADED CERAMIC TILE FLOORING IN FOYER KITCHEN & BATHROOM • CROWN MOLDING IN THE LIVING & DINING ROOMS  
UPDATED CEILING LIGHT FIXTURES IN THE FOYER, KITCHEN & BATHROOMS • PRIVATE SCREENED TERRACES  
LUXURIOUS CARPETING IN LIVING/DINING ROOMS, BEDROOMS, CLOSETS & HALLWAYS • OVERSIZED WINDOWS



Artist conception only. Oral representations cannot be relied upon as stating representations of the developer. For correct representations, reference the prospectus and to the documents required by Section 718.503 Florida Statutes, to be furnished by developer to buyer or lessee. Prices and specifications subject to change without notice.