



THE COSTA MESA II at NOCATEE

THE COASTAL

2,995 ft² - 4 Bedrooms - 3 Bathrooms - 3 Car Garage

The Costa Mesa II is an expanded version of our popular Costa Mesa floor plan! This open floor plan allows for the living room, gourmet kitchen and dining room to be one expansive space sharing plenty of natural Florida sunlight. Like to cook or entertain? You'll also love the oversized walk-in pantry and spacious kitchen. The master bedroom is situated at the rear of the home for privacy. This home is completed with a 3-car garage.

\$2,324
ESTIMATED SAVINGS



This home has a HERS Score of 57 and is estimated to save you \$2,324 on your annual utility bills vs. a resale home.

COSTA MESA II #2995

4 Bedrooms - 3 Bathrooms - 3 Car Garage

Nocatee

Available in...

Ponte Vedra, FL

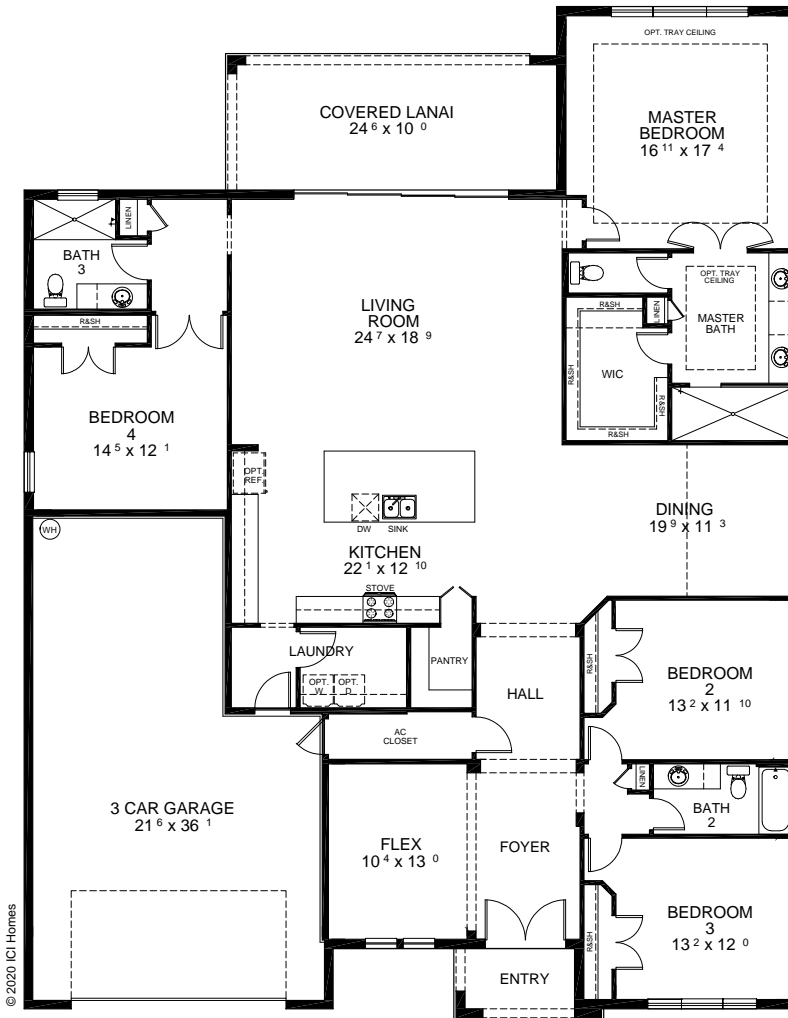
The Anthem Ridge Series

904.533.5985

Total Living Area 2,995 ft²

Total Under Roof 3,994 ft²

Additional Elevations



FIRST FLOOR

Customize this plan, it's easy. See a Sales Associate or visit ICIHomes.com.

©1994-2020: ICI Homes is a trade name of Intervest Construction, Inc., whose divisions operate under CBC057851, CBC1256683, CBC125726, CBC1258104, CBC1262114, CBC1262120, CGC1262235, CGC1523402, CRC1329858. Features listed on this sheet may be plan/community specific and may vary from description; please consult an ICI Sales Representative for specific feature information. All new ICI Homes come with a HBW 2-10 warranty. Certain elevations may have additional fees. Prices may include lot premiums, upgrades, and options. Inventory home completion date may vary. Depending on construction stage, options may not be available at time of contract. All prices are subject to change without notice. All plans are the property of ICI Homes and cannot be copied or used without permission. Prices, promotions, incentives, features, options, amenities, floor plans, elevations, site maps, designs, materials, and dimensions are for illustrative purposes only and subject to change without notice. Renderings and floor plans are conceptual and for the convenience of reference only. They should not be relied upon as representation express or implied of final sizes, locations, features or dimensions. Square footage and dimensions are estimated and may vary from description. All HERS ratings and savings are calculated by a third party energy rating service. Actual savings will depend on a number of factors, including but not limited to daily activities, home maintenance practices, household size, use of appliances, lighting and internal climate control systems, lot orientation, and the surrounding climate and weather conditions.

Garage Orientation R / L: _____ Created on 07/07/2020.



COSTA MESA II #2995

4 Bedrooms - 3 Bathrooms - 3 Car Garage

Nocatee

Available in...

Ponte Vedra, FL

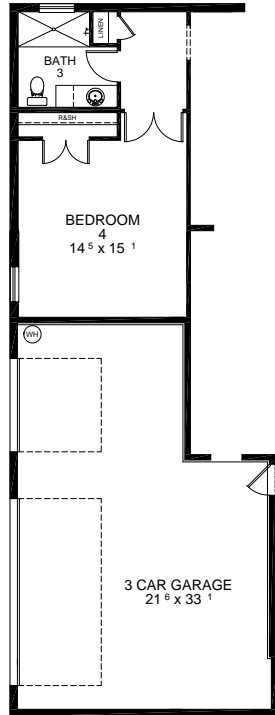
The Anthem Ridge Series

904.533.5985

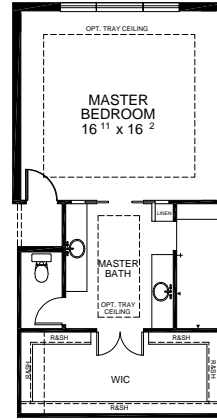
Total Living Area 2,995 ft²

Total Under Roof 3,994 ft²

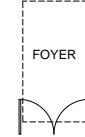
Additional Elevations



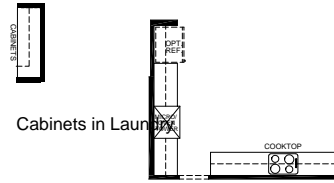
3 Car Side Load Garage



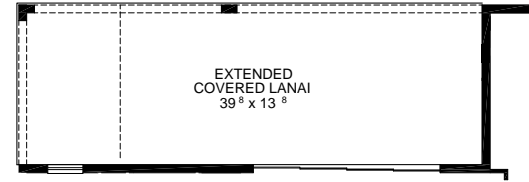
Master Suite Alternate



Tray Ceiling in Hall and Foyer



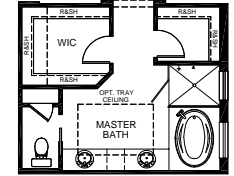
Deluxe Kitchen



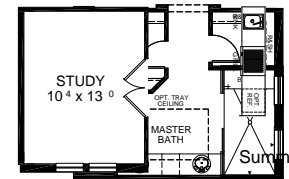
Extended Covered Lanai



Tray Ceiling in Living Room



Master Bath Alternate 1



Study I/O Flex Room Master Bath Alternate with Ext. Shower



Tub in Laundry



Sink & Cabinets in Laundry



Mud Room Bench



Pool Bath Door

Customize this plan, it's easy. See a Sales Associate or visit ICIHomes.com.

©1994-2020: ICI Homes is a trade name of Intervest Construction, Inc., whose divisions operate under CBC057851, CBC1256683, CBC125726, CBC1258104, CBC1262114, CBC1262120, CGC1262235, CGC1520057, CGC1523402, CRC1329858. Features listed on this sheet may be plan/community specific and may vary from description; please consult an ICI Sales Representative for specific feature information. All new ICI Homes come with a HBW 2-10 warranty. Certain elevations may have additional fees. Prices may not include lot premiums, upgrades, and options. Inventory home completion date may vary. Depending on construction stage, options may not be available at time of contract. All prices are subject to change without notice. All plans are the property of ICI Homes and cannot be copied or used without permission. Prices, promotions, incentives, features, options, amenities, floor plans, elevations, site maps, designs, materials, and dimensions are for illustrative purposes only and subject to change without notice. Renderings and floor plans are conceptual and for the convenience of reference only. They should not be relied upon as representation express or implied of final sizes, locations, features or dimensions. Square footage and dimensions are estimated and may vary from description. All HERS ratings and savings are calculated by a third party energy rating service. Actual savings will depend on a number of factors, including but not limited to daily activities, home maintenance practices, household size, use of appliances, lighting and internal climate control systems, lot orientation, and the surrounding climate and weather conditions.

Garage Orientation R / L: _____ Created on 07/07/2020.

