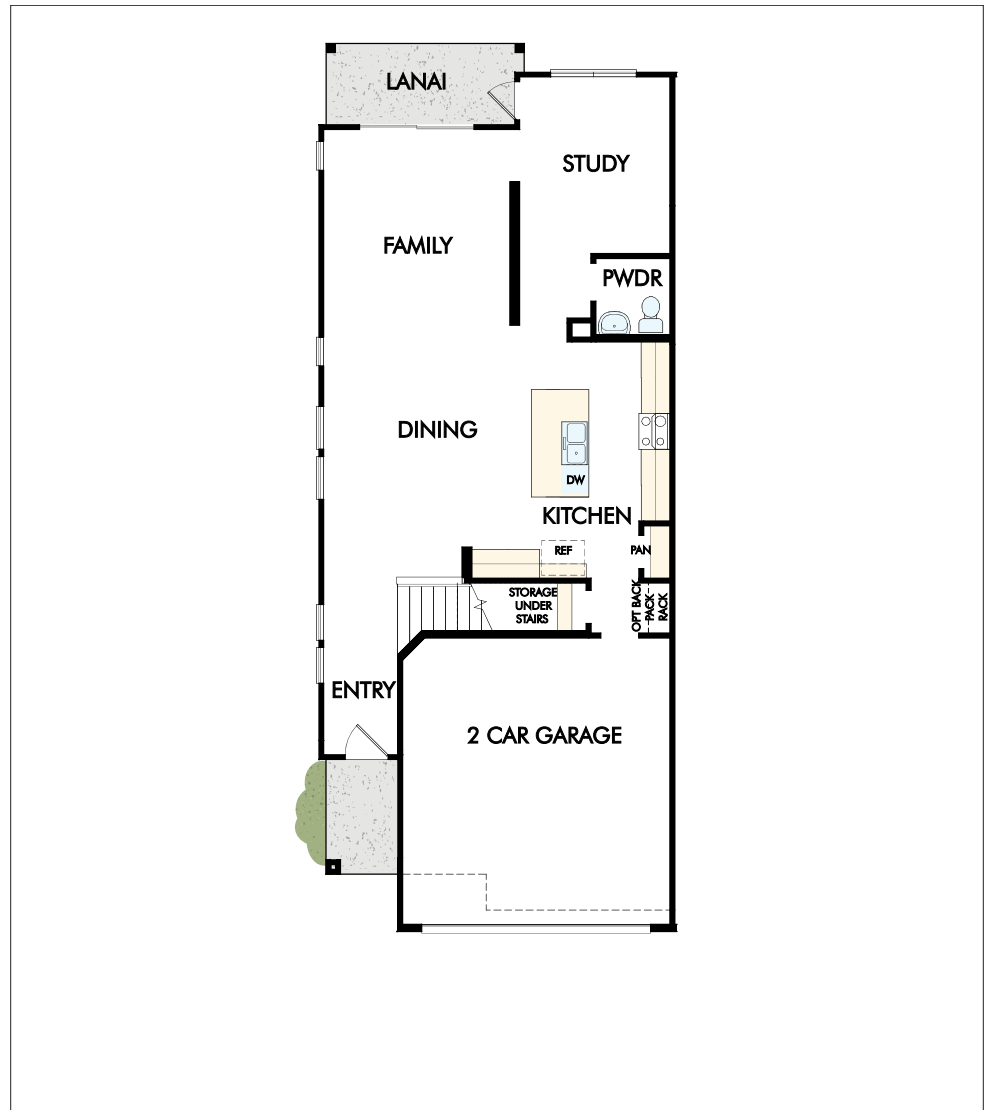


From \$486,400.00 | 2352 - 2367 sq. ft. | 2 Stories | 3 Bedrooms | 2 Bathrooms | 2 Car Garage

## 1st Floor

Options



### Sales Office:

9925 Element Road, Jacksonville, FL 32256

### Hours:

Monday - Saturday 10:00 AM - 6:00 PM

Sunday 12:00 PM - 6:00 PM

or Please Call for an Appointment

### Sales Team

Lisa Daniel (ldaniel@dwhomes.com)

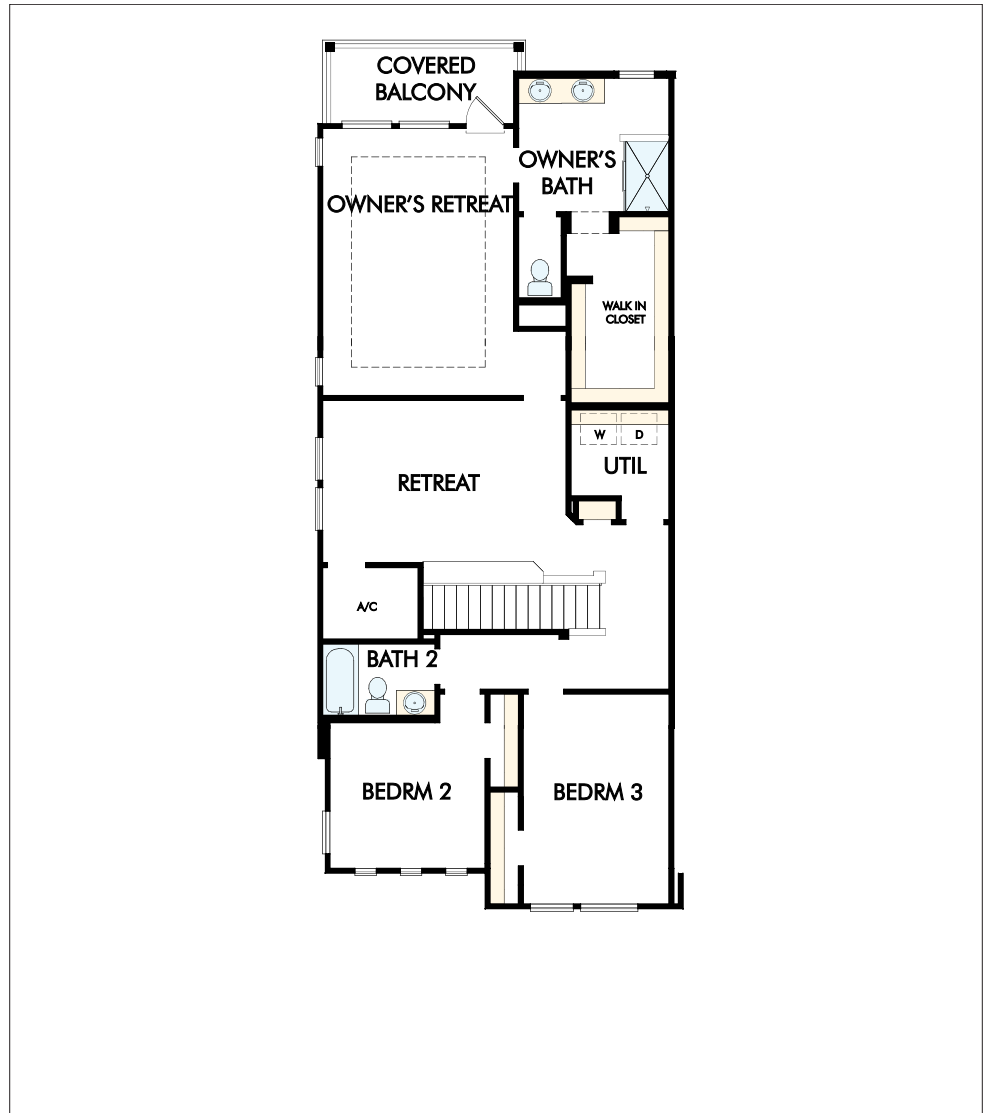
Denise Patricolo (dpatricolo@dwhomes.com)



Figures reflecting size, square footage, and other dimensions are estimates; actual construction may vary. Size/square footage and price of your home may vary based on bonus rooms and options selected. Floor plans may vary according to elevation. Prices, plans, dimensions, features, specifications, materials, and availability of homes or communities are subject to change without notice or obligation. Please contact us to verify current information. Illustrations are artist's depictions only. They may differ from completed improvements and may change without notice.

From \$486,400.00 | 2352 - 2367 sq. ft. | 2 Stories | 3 Bedrooms | 2 Bathrooms | 2 Car Garage  
**2nd Floor**

Options



**Sales Office:**  
9925 Element Road, Jacksonville, FL 32256  
**Hours:**  
Monday - Saturday 10:00 AM - 6:00 PM  
Sunday 12:00 PM - 6:00 PM  
or Please Call for an Appointment

**Sales Team**  
Lisa Daniel (ldaniel@dwhomes.com)  
Denise Patricolo (dpatricolo@dwhomes.com)



Figures reflecting size, square footage, and other dimensions are estimates; actual construction may vary. Size/square footage and price of your home may vary based on bonus rooms and options selected. Floor plans may vary according to elevation. Prices, plans, dimensions, features, specifications, materials, and availability of homes or communities are subject to change without notice or obligation. Please contact us to verify current information. Illustrations are artist's depictions only. They may differ from completed improvements and may change without notice.