

DRAFT

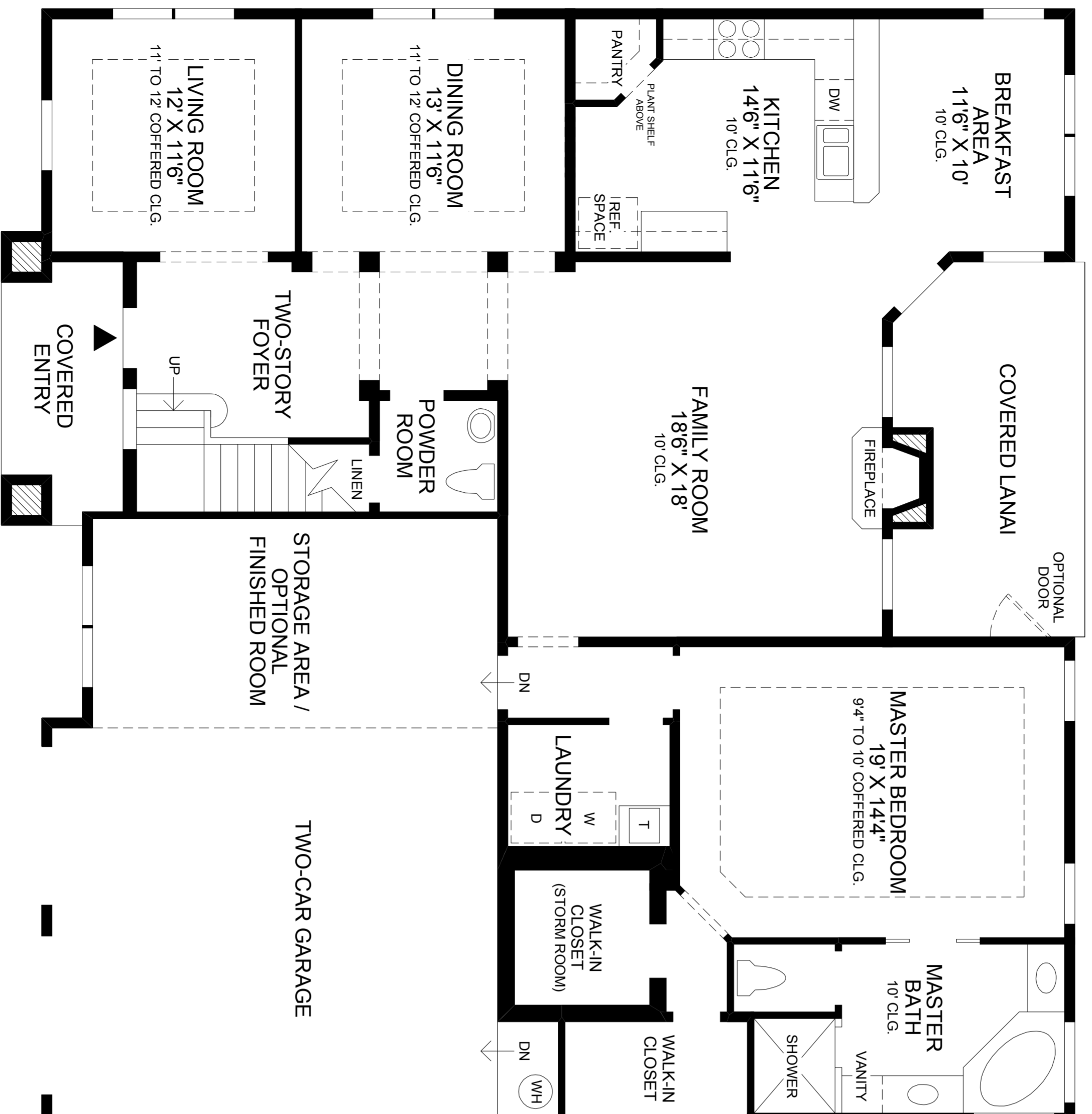
# THE SAN TROPEZ

This impressive split plan home boasts a welcoming two-story foyer that leads to the elegant formal living and dining areas and is accented by a lovely staircase.

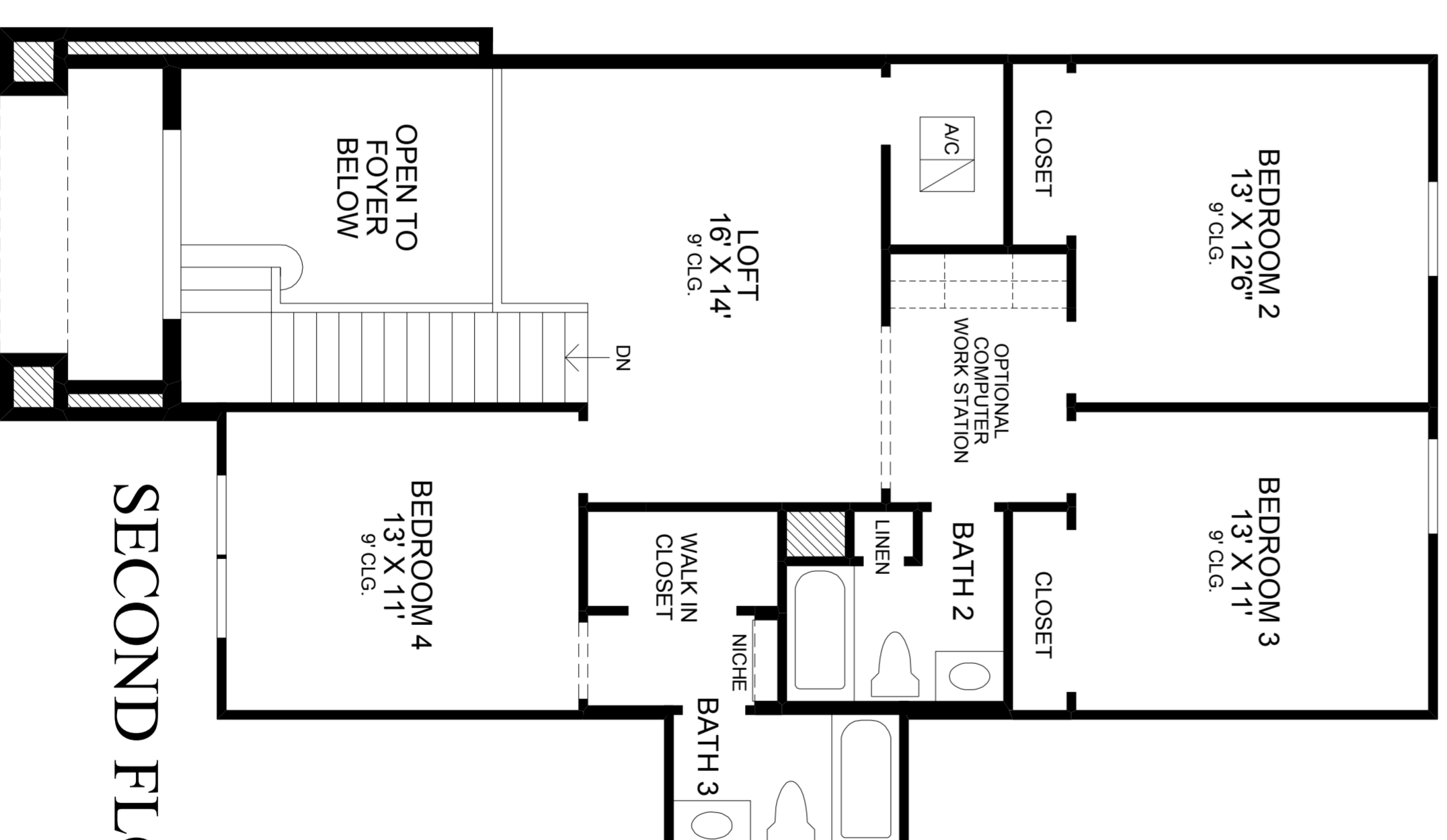
The well-equipped kitchen includes a separate pantry and a raised snack bar that overlooks a sunlit breakfast area. Adjacent to the kitchen is an expansive family room that has a custom built-in fireplace and direct access to the covered lanai.

The master bedroom suite features a beautiful coffered ceiling, an oversized walk-in closet and an opulent master bath with his-and-her vanities, a Roman tub, a separate shower, and a private water closet.

Upstairs, three additional bedrooms and two baths share a large versatile loft that could double as a game room. This family oriented home is further enhanced by a conveniently located powder room, a separate laundry room and a two-car garage with ample storage.



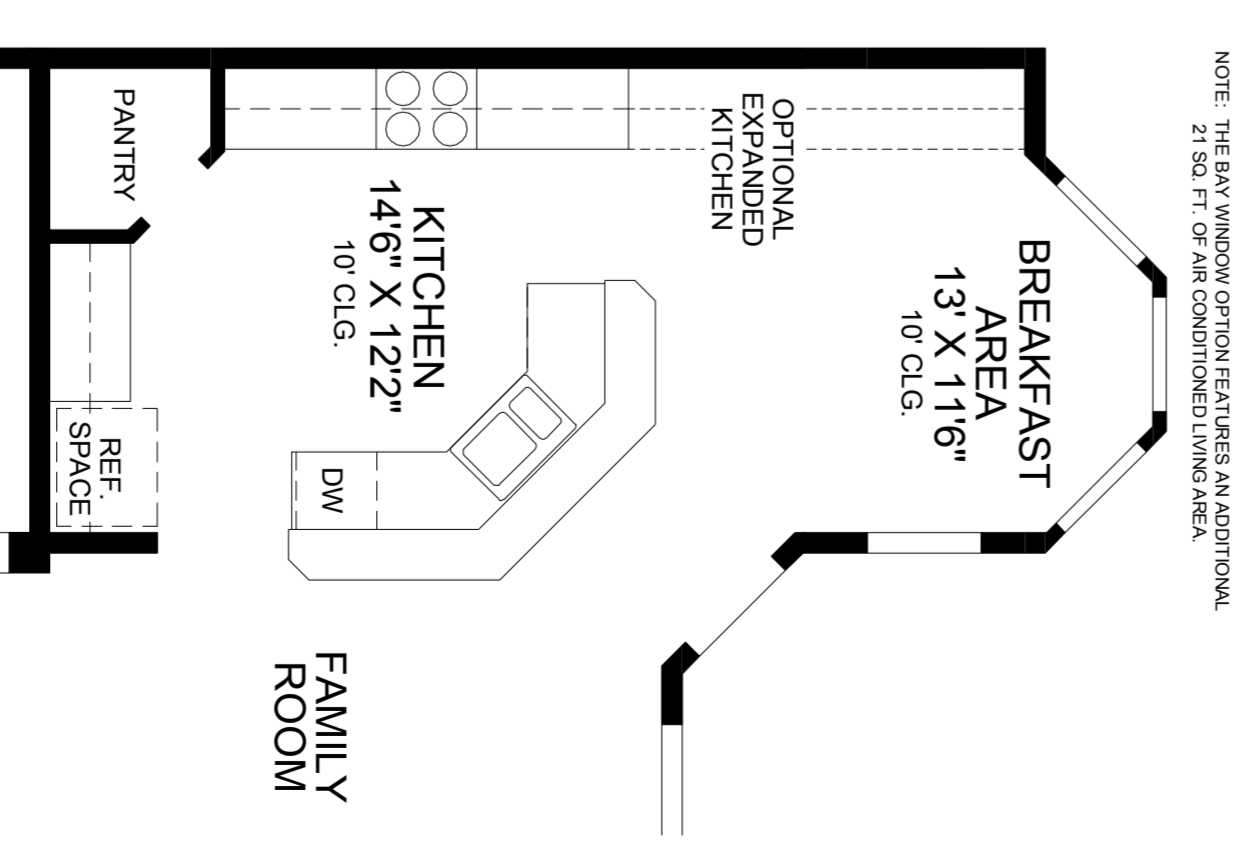
## FIRST FLOOR



## SECOND FLOOR

First Floor	1888 sq. ft.
Second Floor	1020 sq. ft.
Air Conditioned Living Area	2908 sq. ft.
Covered Lanai	161 sq. ft.
Covered Entry	53 sq. ft.
Garage	684 sq. ft.
Total	3806 sq. ft.

### ALTERNATE KITCHEN LAYOUT SHOWN WITH OPTIONAL BAY WINDOW



All dimensions are approximate, shown to the maximum dimensions of each room, and are subject to field variation. Dimensions should not be used to calculate room square footage. Some windows, exterior features, ceiling heights, and floor plans may vary with elevations. Features may also vary from community to community. Please consult a Sales Manager for details. Options purchased must be specified in exhibit B.

(FL-COAB620)\_0510 ©2006 TOLL BROTHERS, INC. (STRP)

**Toll Brothers**  
America's Luxury Home Builder™  
tollbrothers.com



The floor plans and elevations of Toll Brothers homes are copyrighted. We have enforced and will continue to enforce our federal copyrights to protect the investment of our home buyers.

This insert was produced using recycled products.