

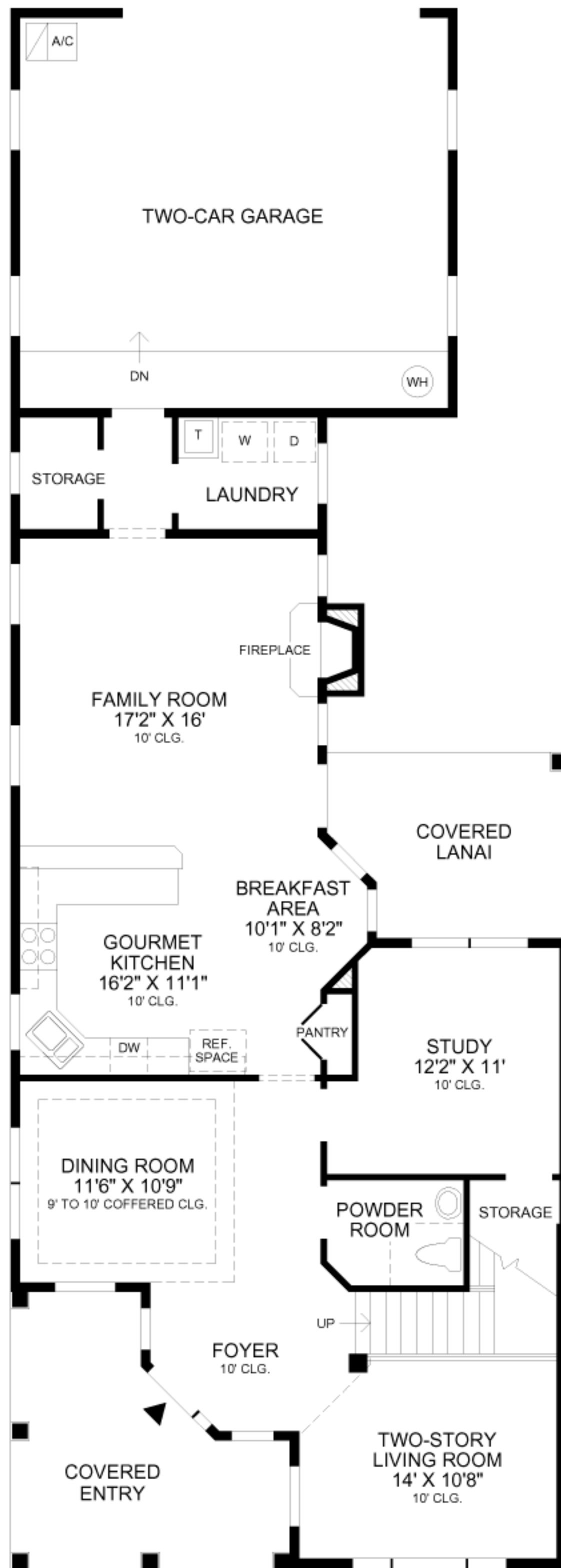
# THE QUEEN ANNE

A welcoming covered entry leads to an elegant foyer which is accented by a turned staircase and charming archways that open up to the formal dining and living areas.

The well-equipped gourmet kitchen features a separate pantry and raised snack bar that adjoins with a sunlit breakfast area and a generous family room with fireplace and access to the covered lanai.

The master bedroom suite features a large walk-in closet and an opulent master bath with his-and-her vanities, Roman tub, separate shower, and private water closet.

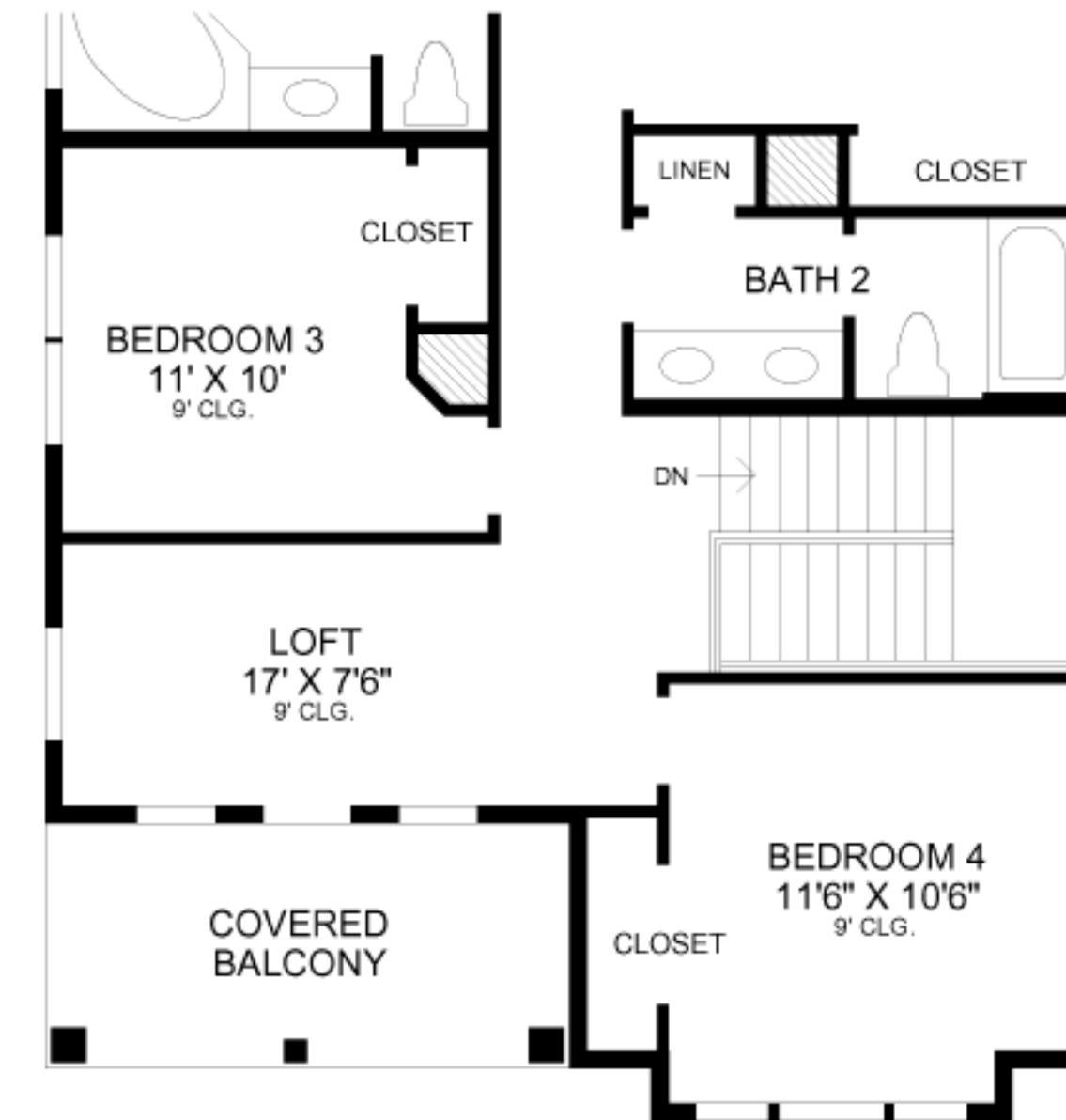
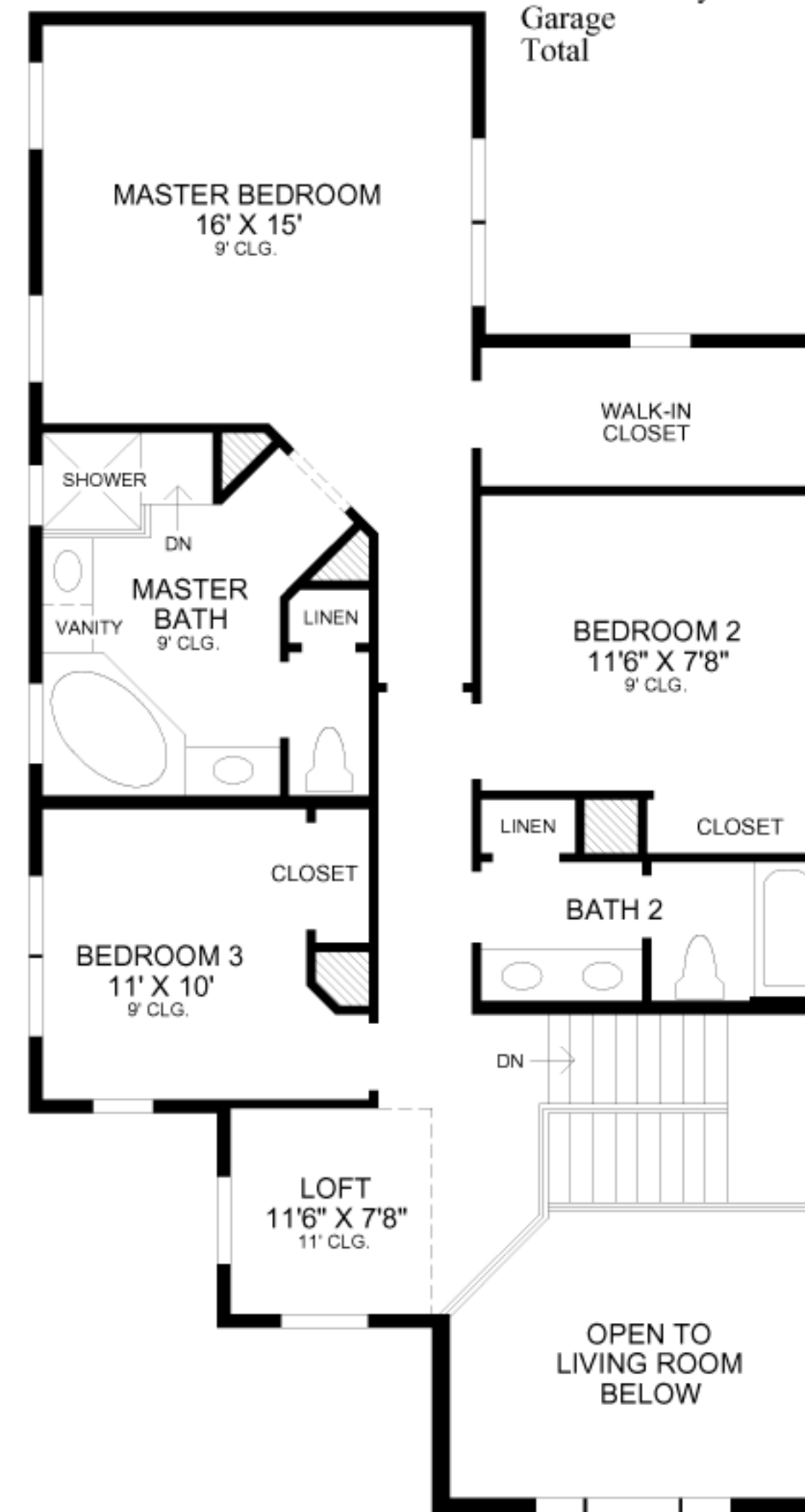
Upstairs, two additional bedrooms and one full bath share a roomy loft that overlooks the living room below. Additional features include a private study, conveniently located powder room, separate laundry room, and two-car garage.



DRAFT

First Floor	1347 sq. ft.
Second Floor	1128 sq. ft.
Air Conditioned Living Area	2475 sq. ft.

Covered Lanai	118 sq. ft.
Covered Entry	169 sq. ft.
Garage	520 sq. ft.
Total	3282 sq. ft.



NOTE: THE CRAFTSMAN AND HERITAGE ELEVATIONS INCLUDE BEDROOM 4 AND COVERED BALCONY WHICH FEATURES AN ADDITIONAL 231 SQ. FT. OF AIR CONDITIONED LIVING AREA AND 105 SQ. FT. OF COVERED BALCONY.

FIRST FLOOR

SECOND FLOOR