



THE VICTORIA at TAMAYA

THE VICTORIA - MEDITERRANEAN

4 Bedrooms • 3 Bathrooms • 3-Car Garage • 2,870 ft² Living Area • 4,030 ft² Under Roof

Enter into exquisite living through the grand foyer of this home. Just past the grand staircase, you'll be lead directly into the wonderfully designed family living area and open kitchen. Choose to dine in the formal dining room or outside in the covered lanai. The second floor's split floor plan features the master suite and spacious bath.

* Renderings may vary from actual home. Please see disclaimer for more details.

\$1,552

ESTIMATED SAVINGS



This home has a HERS Score of 60 and is estimated to save you \$1,552 on your annual utility bills vs. a resale home.

THE VICTORIA

4 Bedrooms • 3 Bathrooms • 3-Car Garage

Tamaya
Jacksonville, FL

Available in
Tamaya 60

Living Area: 2,870 ft² Under Roof: 4,030 ft²

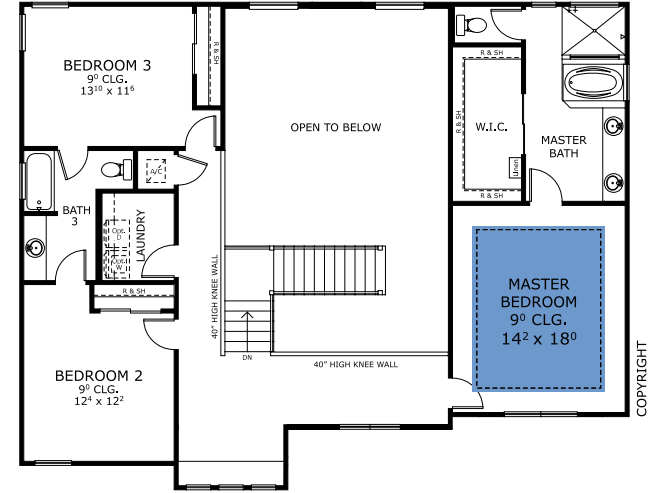
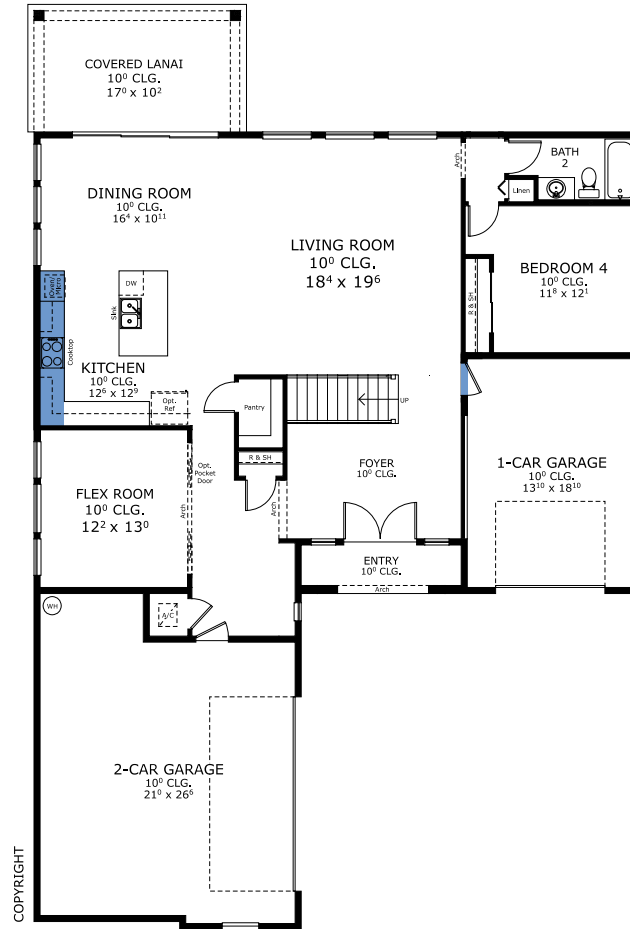
THE SPANISH



THE TUSCAN



FIRST-SECOND FLOOR



Customize this plan, it's easy! (844) 349-6401 or visit [ICIHomes.com](https://www.ICIHomes.com)

©1994-2023: ICI Homes™ is a registered trademark whose divisions operate under CBC1264300, CBC1262120, CRC1333091, CBC1262114, CBC1257263 and CBC1265743. Features may be plan specific and vary. Please consult a Sales Associate for specific feature information. All new ICI Homes come with a HBW 2-10 warranty. Certain elevations may have additional fees. Prices may not include lot premiums, upgrades, and options. Inventory home completion date may vary. All prices subject to change without notice. All plans are property of ICI Homes and cannot be copied or used without permission. Prices, promotions, incentives, features, options, amenities, floor plans, elevations, site maps, designs, materials, and dimensions are for illustrative purposes only and subject to change without notice. Plans should not be relied upon as representation express or implied of final sizes, locations, features or dimensions. Square footage and dimensions are estimated and may vary from description. All HERS ratings and savings are calculated by a third party energy rating service. Actual savings will depend on a number of factors, including but not limited to daily activities, home maintenance practices, household size, use of appliances, lighting and internal climate control systems, lot orientation, and surrounding climate and weather conditions. **Garage Orientation R / L:** _____

Created on 03/09/2024

