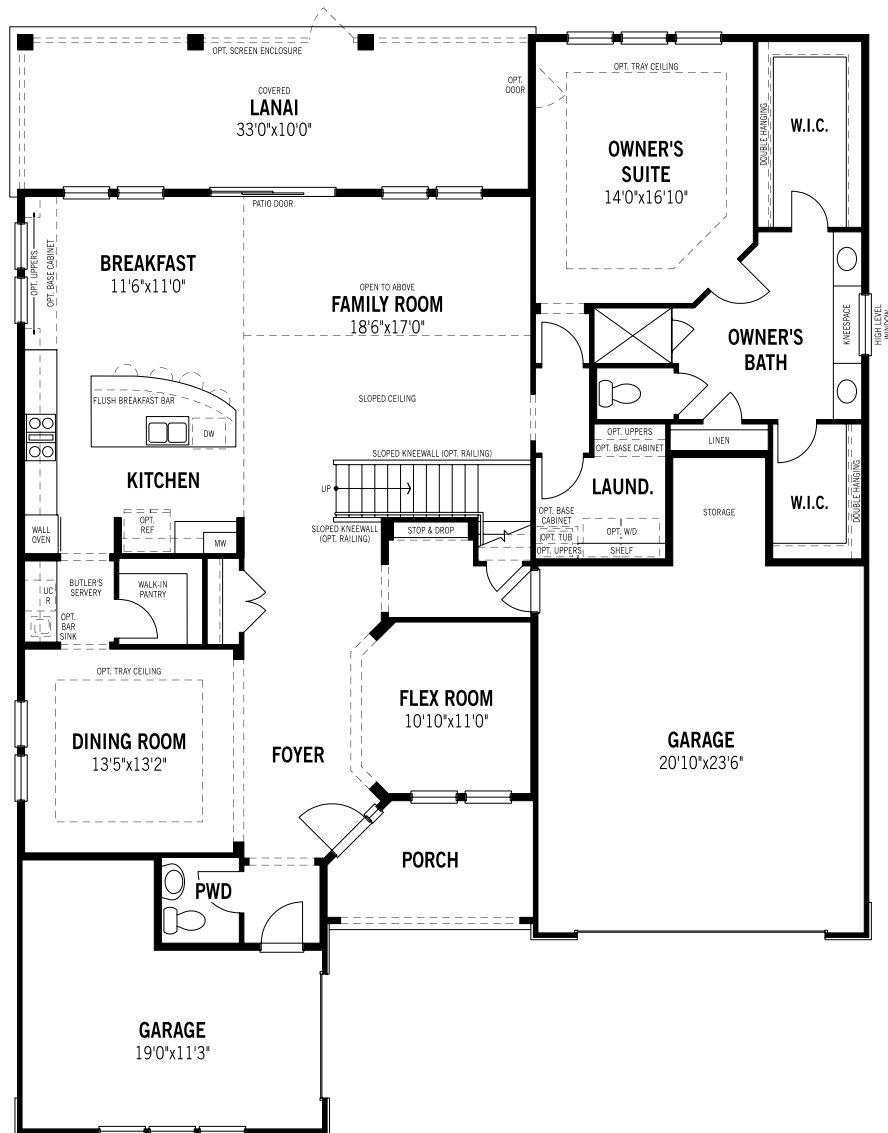




Saxon II - First Floor



Unselected Options:

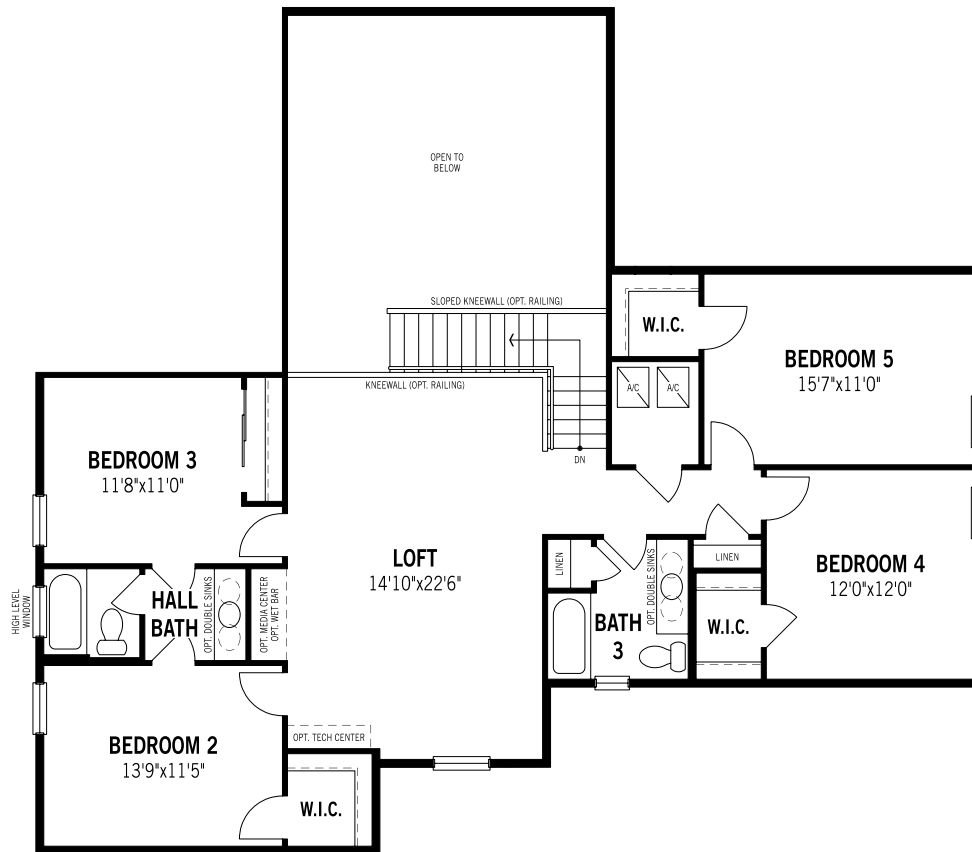
In-Law Suite in Lieu of Dining room & 1-Car Garage, Study in Lieu of Flex Room, Super Shower in Lieu of Storage, Larger Laundry in Lieu of Storage, Fireplace, 16' Sliding Glass Door, Double Sliding Glass Doors, Hideaway Slider, Pool Bath, Owner's Bath Oasis, Larger Owner's Closet in Lieu of Storage

Printed on 1/6/23

Plans and elevations are artist's renderings and may contain options which are not standard on all models. Mattamy Homes reserves the right to make changes to these floorplans, specifications, dimensions and elevations without prior notice. Stated dimensions and square footage are approximate and should not be used as representation of the home's precise or actual size. Square footage of single family homes is generally based upon ANSI Z765-2003 but may vary from time to time and without notice. Square footage of multi-family homes are generally based upon ANSI BOMA Z65.1-1996 but may vary from time to time and without notice.



Saxon II - Second Floor



Unselected Options: Wet Bar, Media w/ Game Room in Lieu of Open to Below, Unfinished Attic

Printed on 1/6/23

Plans and elevations are artist's renderings and may contain options which are not standard on all models. Mattamy Homes reserves the right to make changes to these floorplans, specifications, dimensions and elevations without prior notice. Stated dimensions and square footage are approximate and should not be used as representation of the home's precise or actual size. Square footage of single family homes is generally based upon ANSI Z765-2003 but may vary from time to time and without notice. Square footage of multi-family homes are generally based upon ANSI BOMA Z65.1-1996 but may vary from time to time and without notice.